

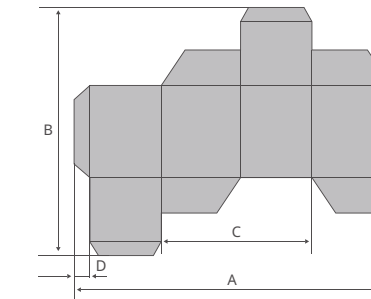
**Eterna is committed
to creating folder gluers
with the highest quality
standards.**

Address:
1125 Taishun Road, Anting Town, Jiading District, Shanghai, China
+86-21-6426 2538
export@eterna-group.com
www.eterna-group.com

Specifications			
Stock Range			
Card board	200-800 g/m ²		
Corrugated board	N, E, F Flute		
Power System			
Max. Belt Speed	320 m/min (420 m/min as optional)		
Jogging Speed	20 m/min		
Main Motor	11 kw		
Total Power Requirement	35 kva		
Max. Air Requirement	0.7 m ³ /min		
	650	900	1100
Machine Dimensions	12.7 × 2 m	12.7 × 2.3 m	12.7 × 2.6 m
Weight	6 Ton	6.5 Ton	7 Ton

* In the interests of product improvement, the manufacturer reserves its rights to change specifications and features without notice

BOX SIZES



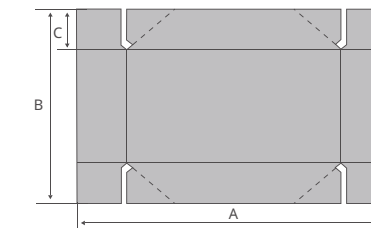
Straight-line boxes (Standard folding section) Unit: mm (inch)

	650	900	1100
A	126-650 (4.96-25.6")	126-900 (4.96-35.43")	126-1100 (4.96-43.31")
	**76-650 (3.0-25.6")	**76-900 (3.0-35.43")	**76-1100 (3.0-43.31")
B	60-800 (2.36-31.5")	60-800 (2.36-31.5")	60-800 (2.36-31.5")
C	60-310 (2.36-12.2")	60-435 (2.36-17.13")	60-535 (2.36-21.06")
	**35-310 (1.38-12.2")	**35-435 (1.38-17.13")	**35-535 (1.38-21.06")
D	6-30 (0.24-1.18")	6-30 (0.24-1.18")	6-30 (0.24-1.18")

****Small Box Folding Device Applied as Optional**

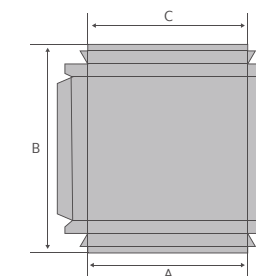
**Small Box Folding Device Applied as Option

***2mm Glue Wheel (optional) as suggestion



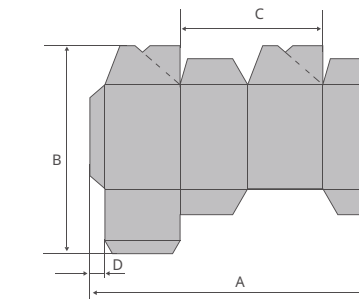
4 corner boxes without lid Unit: mm (inch)

	650	900	1100
A	160-550 (6.3-21.7)	120-900 (4.72-35.43")	120-1100 (4.72-43.31")
B	130-800 (5.12-31.5")	130-800 (5.12-31.5")	130-800 (5.12-31.5")
C	30-150 (1.2-5.91")	30-150 (1.2-5.91")	30-150 (1.2-5.91")



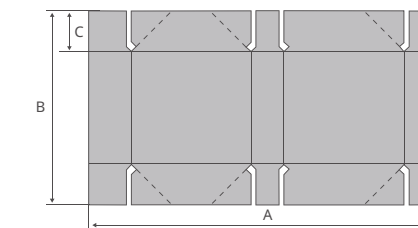
Double wall boxes Unit: mm (inch)

	650	900	1100
A	126-600 (4.96-23.62")	126-700 (4.96-27.56")	126-780 (4.96-30.71")
B	126-800 (4.96-31.5")	126-800 (4.96-31.5")	126-800 (4.96-31.5")
C	70-500 (2.76-19.69")	70-600 (2.76-23.62")	70-680 (2.76-26.77")



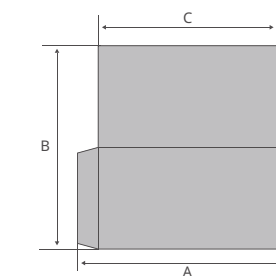
Crash-lock bottom boxes Unit: mm (inch)

	650	900	1100
A	146-650 (5.75-25.6")	146-900 (5.75-35.43")	146-1100 (5.75-43.31")
B	MAX 800 (31.5")	MAX 800(31.5")	MAX 800 (31.5")
C	70-310 (2.76-12.2")	70-435 (2.76-17.13")	70-535 (2.76-21.06")
D	6-30 (0.24-1.18")	6-30 (0.24-1.18")	6-30 (0.24-1.18")



6 corner boxes Unit: mm (inch)

	650	900	1100
A	250-650 (9.84-25.6")	250-900 (9.84-35.43")	250-1100 (9.84-43.31")
B	130-800 (5.12-31.5")	130-800 (5.12-31.5")	130-800 (5.12-31.5")
C	30-150 (1.2-5.91")	30-150 (1.2-5.91")	30-150 (1.2-5.91")



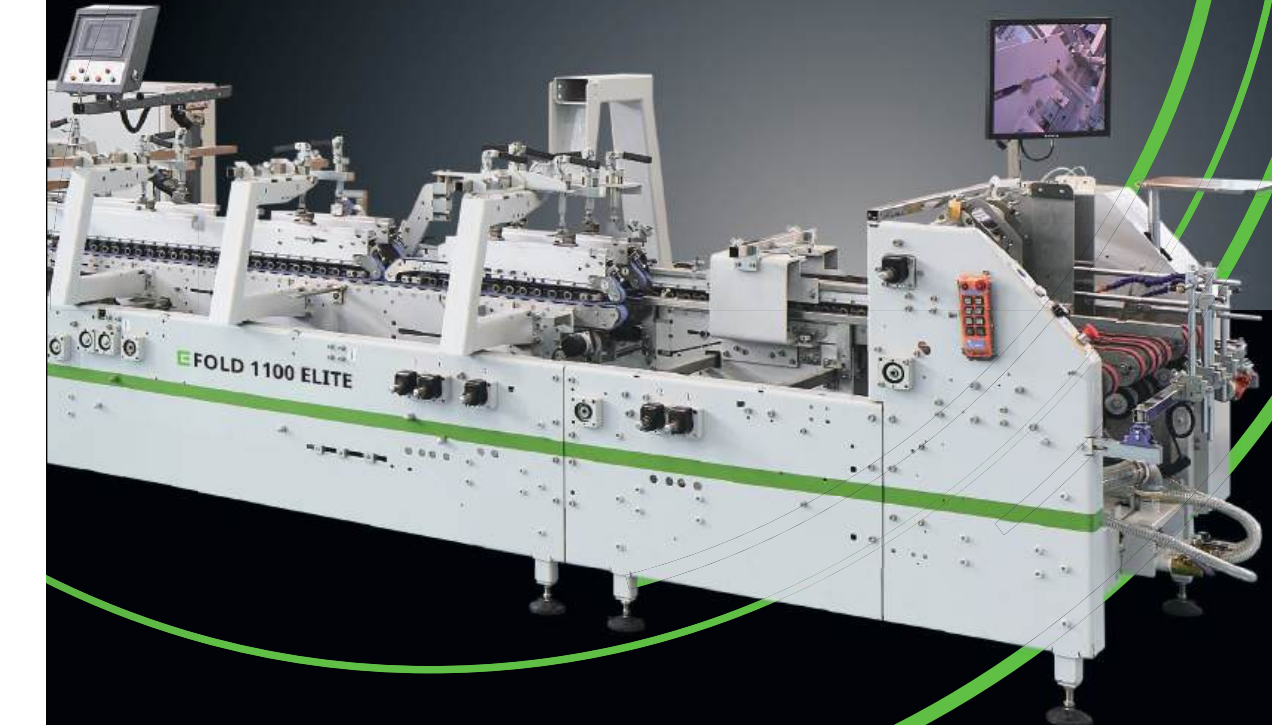
Record covers, pouches & envelopes Unit: mm (inch)

	650	900	1100
A	134-620 (5.28-24.4")	134-700 (5.28-27.56")	134-760 (5.28-29.92")
B	150-800 (5.91-31.5")	150-800 (5.91-31.5")	150-800 (5.91-31.5")
C	110-560 (4.33-22.05")	110-640 (4.33-25.2")	110-700 (4.33-27.56")

Automatic Folder Gluer for Folding Carton

E FOLD 650/900/1100 ELITE

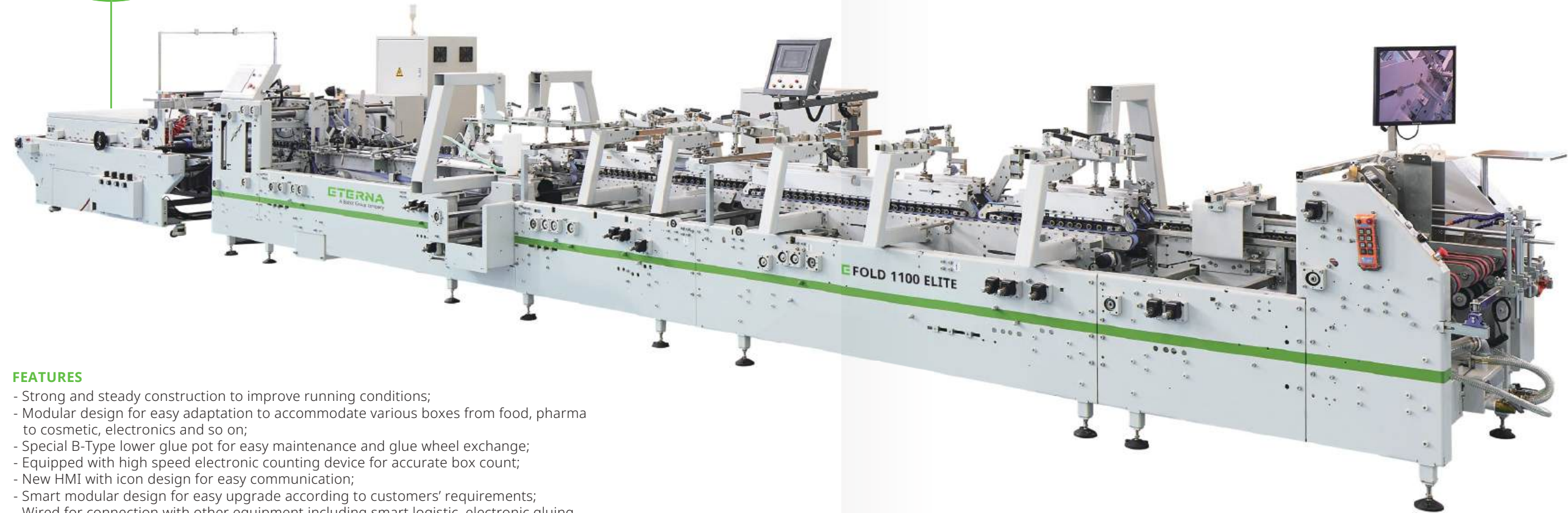
Simply robust



Automatic Folder Gluer
for Folding Carton

E FOLD 650/900/1100 ELITE

Whether it is a straight-line box, a crash-lock bottom box, a 4/6 corner box or other boxes, you can precisely configure the ETERNA folder gluers according to your production demands.

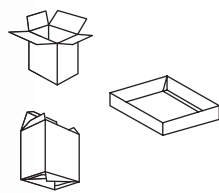


FEATURES

- Strong and steady construction to improve running conditions;
- Modular design for easy adaptation to accommodate various boxes from food, pharma to cosmetic, electronics and so on;
- Special B-Type lower glue pot for easy maintenance and glue wheel exchange;
- Equipped with high speed electronic counting device for accurate box count;
- New HMI with icon design for easy communication;
- Smart modular design for easy upgrade according to customers' requirements;
- Wired for connection with other equipment including smart logistic, electronic gluing, inspection system and so on.

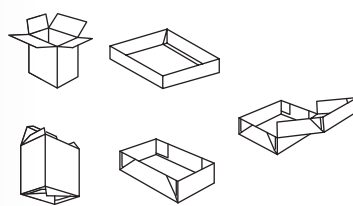
Configuration

C3



C3 = Straight line boxes, double wall boxes and crash-lock bottom boxes

C6



C6 = Straight line boxes, double wall boxes, crash-lock bottom boxes and 4/6 corner boxes.



FEEDER SECTION

- Side guides, Feeder gates are easy to operate;
- Eight individually adjustable feed belts ensure easy setup and smooth feeding(650 has six individual adjustable feed belts);
- Rotary cleaning brushes;
- Supporting bars with high performance vibrating motor;
- Separate motor for variable frequency speed control.



SIDE-ALIGNMENT SECTION (OPTIONAL)

- Side Alignment Section can be retrofitted between Feeder and Pre-breaking Section, which is specially designed for irregular box and straight-line box to ensure stability.



PRE-BREAKING SECTION

- 3-carrier(650 with two carries) throughout with pre-breaking sword (180°) at the left side and belt pre-break device (180°) on the right side enables the pre-folding of the 1st and 3rd crease line to make final filling much easier;
- Sectional upper carrier can be telescopically adjusted to meet wide range boxes;
- Upper central carrier can be removed for job set up.



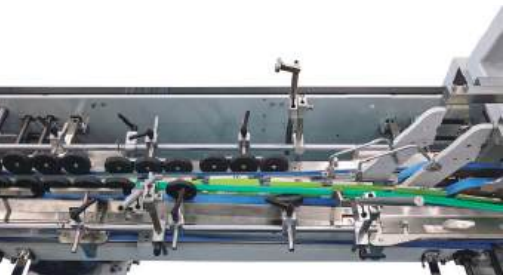
LOCK BOTTOM SECTION

- 3-carrier construction, sectional upper carrier is used as pre-breaking for irregular boxes;
- Upper center carrier can be removed to give space for job set up;
- Reserved space from original C3 to fit 4/6 Corner servo drive back folding system.



GLUING SYSTEM

- One set mechanical (B-TYPE) lower gluing pot (left side) is specially designed not to splash glue during high speed production for easy maintenance;
- Electronic gluing system must be applied when making lock bottom or 4/6 corner boxes.



FINAL FOLD SECTION

- 3-carrier construction (650 with 2-carrier);
- Left/Right outward folding belts with speed micro-adjustment;
- Central upper and lower carrier can be removed for job set up.



TROMBONE SECTION

- High speed kick counter and jam detector are included;
- Upper/Lower belts can be telescopically adjusted;
- Separate motor for variable frequency speed control.



CONVEYOR COMPRESSION SECTION

- Pneumatic pressing system easily to be adjusted, giving perfect gluing performance;
- Standard conveyor compress area is 2meter length;
- To extend compress length (3m or 5m) can be an option;
- Either auxiliary conveyor or e-PACK can be applied to improve delivery efficiency (optional).

E FOLD 650/900/1100 ELITE