

**Eterna is committed  
to creating folder gluers  
with the highest quality  
standards.**

Address:  
1125 Taishun Road, Anting Town, Jiading District, Shanghai, China  
+86-21-6426 2538  
export@eterna-group.com  
www.eterna-group.com

### Stock Range

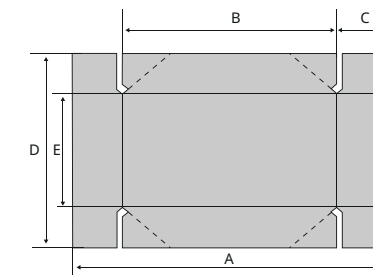
Card board	250-800 g/m <sup>2</sup>
Corrugated board	E and F Flute

Max. Belt Speed	420 m/min
Jogging Speed	20 m/min
Main Motor	15 kw
Total Power Requirement	22 kw
Max. Air Requirement	0.7 m <sup>3</sup> /min

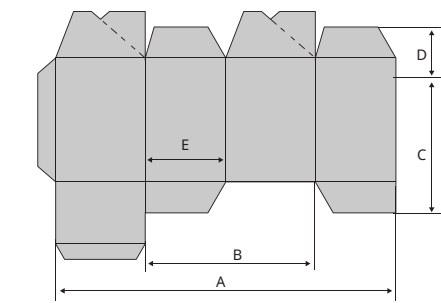
	650	900	1100
Machine Dimensions	15.8 × 1.35 m	15.8 × 1.5 m	15.8 × 1.8 m
Weight	5.5 Ton	6 Ton	6.5 Ton

A diagram of a stepped block composed of several rectangular prisms. The overall width is labeled  $A$ , the overall height is labeled  $B$ , the width of the central section is labeled  $C$ , and the width of one of the side sections is labeled  $D$ .

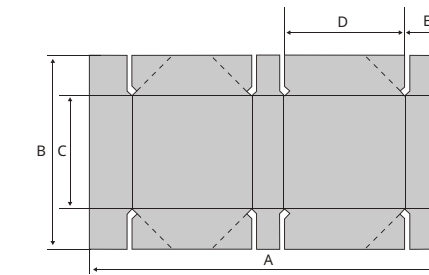
	650	900	1100
A	100-650 (3.94-25.6")	120-850 (4.72-33.46")	120-1100 (4.72-43.31")
B	70-700 (1.97-27.56")	100-900 (3.94-35.43")	100-900 (3.94-35.43")
C	Min 45 (1.77")	Min 55 (2.17")	Min 55 (2.17")
D	Min 10 (0.39")	Min 10 (0.39")	Min 10 (0.39")



	650	900	1100
A	160-500 (6.30-19.69")	160-700 (6.30-27.56")	160-1000 (6.30-39.37")
B	Min 100 (3.94")	Min 100 (3.94")	Min 100 (3.94")
C	Min 30 (1.18")	Min 30 (1.18")	Min 30 (1.18")
D	Max 600 (23.62")	Max 600 (23.62")	Max 600 (23.62")
E	Min 100 (3.94")	Min 100 (3.94")	Min 100 (3.94")



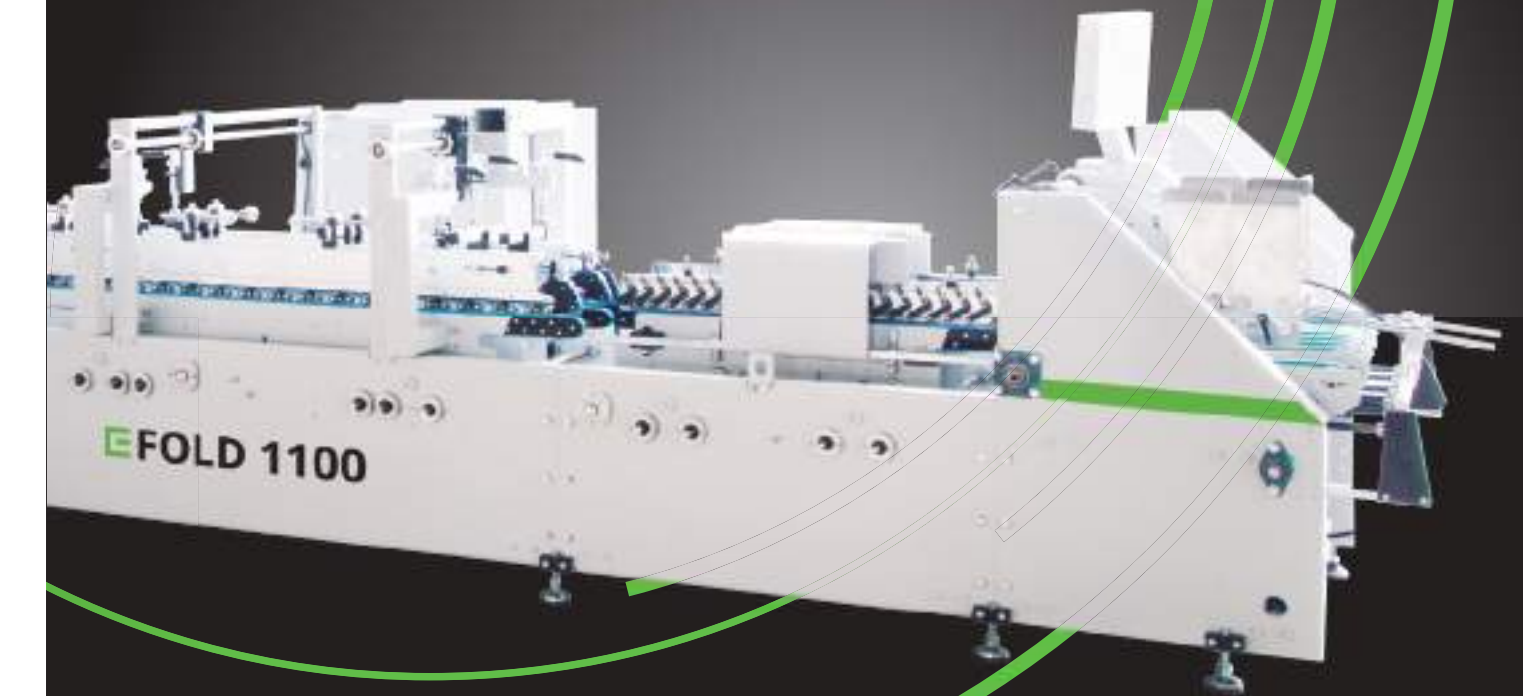
	650	900	1100
A	160-650 (6.30-25.6")	160-850 (6.30-33.46")	160-1100 (6.30-43.31")
B	Min 75 (2.95")	Min 75 (2.95")	Min 75 (2.95")
C	60-450 (2.36-17.72")	60-650 (2.36-25.59")	60-650 (2.36-25.59")
D	25-150 (0.98-5.91")	25-150 (0.98-5.91")	25-150 (0.98-5.91")
E	Min 25 (0.98")	Min 25 (0.98")	Min 25 (0.98")



	650	900	1100
A	290-600 (11.42-23.62°)	290-850 (11.42-33.46°)	290-1100 (11.42-43.30°)
B	180-550 (7.09-21.66°)	180-550 (7.09-21.66°)	180-550 (7.09-21.66°)
C	Min 100 (3.94°)	Min 100 (3.94°)	Min 100 (3.94°)
D	Min 100 (3.94°)	Min 100 (3.94°)	Min 100 (3.94°)
E	Min 30 (1.18°)	Min 30 (1.18°)	Min 30 (1.18°)

## EFOLD 650/900/1100

# Simply robust



**ETERNA**  
A Bobst Group company

eterna-group.com

\* In the interests of product improvement, the manufacturer reserves its rights to change specifications and features without notice.

Automatic Folder Gluer  
for Folding Carton

# E FOLD 650/900/1100

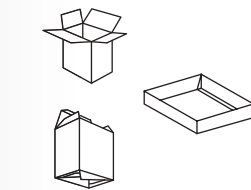
Whether it is a straight-line box, a crash-lock bottom box, a 4/6 corner box or other boxes, you can precisely configure the ETERNA folder gluers according to your production demands.



- FEATURES**
- High speed and stable operation especially designed for straight-line box and crash lock boxes;
  - Modular design for easy adaptation and upgrades;
  - Alignment Section as standard equipment to ensure proper feeding;
  - Newly designed HMI with mostly icons to eliminate language barrier and friendlier operator experience;
  - Remote control unit for easy operation.

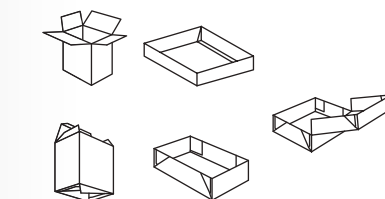
## Configuration

C3



C3 = Straight line boxes, double wall boxes and crash-lock bottom boxes

C6



C6 = Straight line boxes, double wall boxes, crash-lock bottom boxes and 4/6 corner boxes.



- FEEDER SECTION**
- Designated A/C motor with micro-adjustable variable speed controller for even spacing of box blanks;
  - Individual adjustable feed belts (two of which are suction belts) ensure easy setup and smooth feeding;
  - Motorized embossing roller guiding the belts to transport sheets.



- SIDE-ALIGNMENT SECTION**
- Side Alignment Section can be retrofitted between Feeder and Pre-breaking Section.



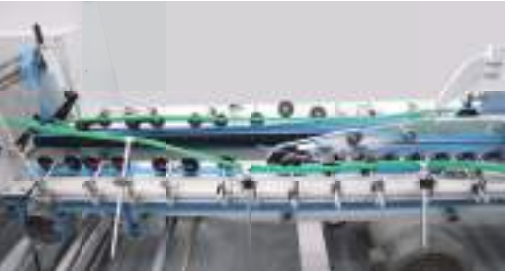
- PRE-BREAKING SECTION**
- 3-carrier(650 with two carries) throughout with pre-breaking sword at the left side and belt pre-break device on the right side enables the pre-folding of the 1st and 3rd crease line to make final filling much easier;
  - Sectional upper carrier can be telescopically adjusted to meet wide range boxes;
  - Upper central carrier can be removed for job set up.



- LOCK BOTTOM SECTION**
- 3-carrier construction, sectional upper carrier is used as pre-breaking for irregular boxes;
  - Upper center carrier can be removed to give space for job set up;
  - Reserved space from original C3 to fit 4/6 Corner servo drive back folding system.



- GLUING SYSTEM**
- Two sets of conventional lower gluing pot (left and right side) at final folding section;
  - Upper gluing wheel system at lock bottom section can be applied (optional);
  - Non-contact gluing system can be applied (optional).



- FINAL FOLD SECTION**
- 3-carrier construction (650/900 with 2-carrier);
  - Left/Right outward folding belts with speed micro-adjustment;
  - Central upper and lower carrier can be removed for job set up.



- TROMBONE SECTION**
- Batch counter kicker or water batch counting system for easy production;
  - Jam detector;
  - Upper and lower belts can be telescopically adjusted for easy production run.



- CONVEYOR COMPRESSION SECTION**
- Two operation modes of compressing belt speed;
  - Pneumatic pressing system for easy adjustment to increase the gluing effect;
  - Either auxiliary conveyor or e-PACK can be applied to improve delivery efficiency (optional).

E FOLD 650/900/1100